

BOISE

\$3.95 Winter 2011

Budget Bliss

hard times call for simple pleasures

Wine Myths 101

The Brewing
Revolution in America

Saved by Seeds

growing history with heirloom tomatoes

Hells Canyon

National Scenic Byway

Jany Rae Seda

freedom to explore

Treeworks

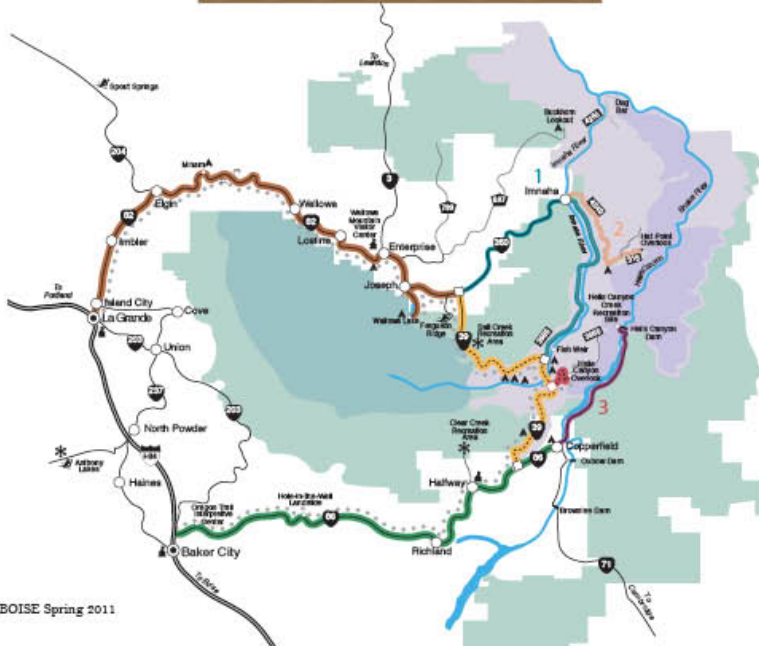
green business with all the trimmings

Crane Creek Country Club



Hells Canyon Scenic Byway

4 Days & 4 Nights



32 • BOISE Spring 2011

The National Scenic Byway project by the U.S. Department of Transportation has recognized routes across America "based on one or more archeological, cultural, historic, natural, recreational and scenic qualities." The Hells Canyon National Scenic Byway offers all of these and more.

This 218 mile journey takes you in a loop through the Oregon towns of Baker City, Union, La Grande, Elgin, Wallawa, Lostine, Enterprise, Joseph, and Halfway. The following are but a few of the highlights to see and do on this wonderful journey in Eastern Oregon.

Baker City, OR

Geiser Grand Hotel
Tops on the places to stay is the Historic (1889) Geiser Grand Hotel. This is a wonderfully restored symbol of the early gold-mining boom in eastern Oregon. Ormately carved mahogany, Victorian-style chandeliers, a stained glass ceiling, and delicious northwest cuisine. www.geisergrand.com

Baker Heritage Museum
Housed in the historic 1920 Natatorium, the museum brings to life the rich history of the region. Permanent and changing exhibits of mining, timber, ranching, agriculture, and early Baker City life. www.bakerheritagemuseum.com,

Historic Adler House
The restored 1889 Italianate home of philanthropist, Leo Adler, for 94 years. Adler lived in the home from the time he was five until his death in 1993 at the age of 98. After his mother died in the 1930s, the upstairs was never touched again. There is no water or electricity to the upstairs, and it retains its original wallpaper from 1889. This is a unique chance to see a turn of the century home in true original condition. www.basecampbaker.com

The Carnegie Arts and Cultural Center
The Carnegie Arts and Cultural Center (originally the Carnegie Library, 1909) was one of 1,689 libraries donated by Carnegie around the turn of the century. www.crossroads-arts.org

Union, OR

Union County Museum
Visit the Union County Museum for the Cowboys Then & Now exhibit. www.unioncountymuseum.org

La Grande, OR

Eastern Oregon Fire Museum
Visit the Eastern Oregon Fire Museum to satisfy the kid in you. www.visitlagrande.com

The Potter's House
Pick up a gift at The Potter's House. www.thepottershousgallery.com

Ten Depot
Have dinner at Ten Depot and a night cap at Mt. Emily Ale House. www.tendepotstreet.com www.mtemilyalehouse.com

DAY ONE

The National Historic Oregon Trail Interpretive Center

This spectacular venue will fill you with knowledge about the history of the Oregon Trail. The interpretive center has six themed exhibits to engage the visitor. There is a Living History Encampment, Living History Performances, a 4.2 mile Interpretive Trail System, photos of Wagon Ruts and remnants of the historic Flagstaff Mine. www.blm.gov/or/oregontrail



BOISE Spring 2011 • 33

The Maxville Project

A descendants journey to honor the African American loggers of 1920's Oregon.

In the 1920's a small group of African American loggers came to Maxville, Oregon to escape the racism of the South.

The families scratched out an existence and by 1926 Maxville was one of the largest towns in Willowa County. The Great

Depression meant the practical end to Maxville's logging industry but many of the African American families stayed. Gwen Trice is a descendant and the heart and soul of the Maxville Project.

Gwen first created an Oregon Public Broadcasting documentary, "The Logger's Daughter," which chronicled life in Maxville and her family's roots. The Maxville Project is an extension in which she is creating a nonprofit Maxville Heritage Interpretive Center. The center will celebrate the multi-ethnic culture of the railroad and timber industry of Maxville, Oregon and similar communities in the Pacific Northwest.

at The Baker City Heritage Museum summer 2011

Wally's Airstream Baker City Celebrates a Native Son's Travel Trailer Legacy

Written by Kyla Sawyer



Drive anywhere in the world and it's hard to miss an Airstream trailer. With its sleek aluminum skin gleaming in the sunlight, its distinct lines and iconic shape symbolize the spirit of travel trailer adventure.

"Who doesn't know what an Airstream trailer is?" laughs Baker Heritage Museum Director Christine Cantrell. "But when you tell people that the inventor of the Airstream is from Baker City, Oregon, they are like, 'Wow, who knew?'"

No doubt thousands of Airstream enthusiasts have driven right by the Baker City exit leading to the Baker Heritage Museum, missing an opportunity to learn more about the man who conceived the idea of traveling the world with all the comforts of home.

Unless you are seriously into Airstreams, Cantrell acknowledges that you won't know who founder Wally Byam is. Yet Airstream owners have an almost cliquish obsession with Byam (pronounced *BY-um*). From the time he started building trailers in the early 1930s to his death in 1962, the inventor led thousands of Airstreamers on caravans across the country and around the world.

"People are captivated by the knowledge that Wally Byam was born in Baker City; it's remarkable to them and so we're really excited to tell people he was from here," beams Cantrell.

Byam was born on July 4, 1896, and would have celebrated his 115th birthday this year. Cantrell explains that although an exhibit featuring Wally's connection to the Baker City area has been on a shortlist of ideas for some time, it seems like a perfect opportunity for the museum's 2011 season, which will run from mid-March through October.

"He was born when this community was thriving, filled with people who had settled along the Oregon Trail with their homesteads and gold mining. The spirit of adventure was so alive here then," says Cantrell. "All those souls who had the spirit to conquer the West were just establishing this Eastern Oregon area at the time this man was born."

Byam seemed destined to seek out adventure. Letters submitted to the museum by his relatives mention summers that he spent with them at Haines, a small town northwest of Baker City, and describe his camping, fishing and picnicking experiences in the nearby Blue Mountains. Byam also worked for many of his younger teen years as a shepherd for his grandfather.

Although he graduated from Stanford with a degree in law, Byam never applied for a board examination but became an advertising copywriter instead. His work in magazine publishing eventually led him to purchase an

article on how to build a trailer. Ironically, it was complaints about the plans that prompted him to try to build it himself, and the rest, as they say, is history.

Besides the Airstream trailer design itself, Byam also became well known for travel-testing his own product. As a result he guided thousands on caravan adventures worldwide, says Cantrell.

"What surprises so many is how far Byam traveled with these Airstream caravans in Africa and Europe. In the 1950s there weren't always paved roads or electricity, so the globetrotting was really amazing. Byam had a spirit of adventure that relates to where he was from. That's the correlation I like. He almost had gold fever and he took in on the road."

In addition to a variety of Airstream memorabilia and photographs of Byam's travels in the United States and abroad, the exhibit will feature snapshots, tributes and stories highlighting his early years in Baker County. Byam's books—*Fifth Avenue on Wheels* and *Trailer Travel Here and Abroad: The New Way to Adventurous Living*—as well as other Airstream-related items will be available for purchase at the museum store.

Cantrell also plans to have an actual Airstream trailer on display outside the museum, and has scheduled a special Wally Byam birthday party for the July 4, 2011, weekend.

"With Baker City positioned on the major Interstate 84 corridor between Boise and Portland, so many people are traveling through here who share Byam's sense of wanderlust," Cantrell points out. "Byam was known to be extremely charismatic, leading people throughout the world with his caravaning spirit, and we think it's good to celebrate that spirit."

"His life was bigger than life and we want to showcase that excitement!"

Baker Heritage Museum

2490 Grove St., Baker City, Oregon

541.523.9300

www.bakerheritagemuseum.com

Open mid-March through October. Admission \$6 adults, \$5 seniors, children 12 and under free. Inquire for group rates.



DAY TWO

Enterprise, OR

Enterprise has become one of the great centers for western bronze art. Parks Bronze and TW Bronze will give you a new understanding of how modern bronze casting is performed with a tour of their foundries. www.parksbronze.com www.twbronze.com



Elgin, OR

Eagle Cap Excursion Train

runs along the Grande Ronde & Wallowa Rivers offering true scenic beauty on a piece of Oregon history. This train also offer unique fly fishing access for the avid fisherman. www.eagletrain.com

Wallowa, OR

Wallowa Band Nez Perce

Visitors Center tells the story of the Wallowa Band Nez Perce Trail as part of Oregon's four National Historic Trails. Don't miss the Annual Nez Perce 'Tamkaliks' Celebration in July or the annual 'Nez Perce Art in the Wallows' in October. www.wallowanezperce.org



Sunrise Iron

On display are over 30 antique tractors and equipment dating back as far as 1835. This is one man's monumental tribute to the agricultural heritage of North America in the 1800's and 1900's. Low key, unassuming, and just plain fun! www.sunriseiron.com

Enterprise, OR

The Historic Enterprise House Bed & Breakfast

On your second night find a restful nights sleep at the 1910 Historic Enterprise House Bed & Breakfast. For a special treat enjoy the honeymoon Suite, a spacious one

bedroom suite with a separate sitting room and luxurious bath. Traveling with the family? Try the Eagle Cap Suite which comprises the entire 3rd floor. 3 Queen beds, 3 Twin beds, sleeps up to 9 or more. www.enterprisehousebnb.com

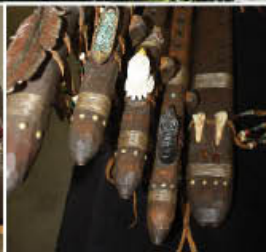
Fishtrap

"Promoting clear thinking and good writing in and about the West" is the focus of this Northwest writers gathering. Fishtrap features both summer and winter gatherings, workshops, and community events. www.fishtrap.org

Hells Canyon Mule Days

This event celebrates the tough, intelligent, individualistic, often maligned - mule, the mainstay of packers and outfitters. As with many areas across the country, the mule served a vital role for the pioneers of Wallowa County. Always held the weekend after Labor Day, this festival is three days of rodeo-type events in which the mule is honored in this offbeat western festival. Attractions include a non-motorized parade, a mule and donkey auction, the fast ass express, wild cow milking (I am sure the donkey's prefer this), quilt show, food, and entertainment.

www.hellscanyonmuledays.com



DAY THREE Joseph, OR

Joseph, OR

The town of Joseph, Oregon and Wallowa Lake are two of the highlights of the Hells Canyon Scenic Byway. Sitting at an elevation of 4,150 feet, a population of only 1,054 people, and the picturesque Eagle Cap Wilderness as your background, Joseph is at once a place where you want to stay and enjoy all it has to offer.

Wind Dancer Flutes

Visit Flute maker & artist Roger McGee. Native American flutes, hand made with hand made tools. www.wind-dancer-flutes.com

Dine at Calderas

Calderas features delicious foods locally sourced including produce grown in their own garden. www.calderasofjoseph.com

Stein Distillery

A family-owned, handcrafted, turn-key operation for fine Northwest Rye vodka and cordials featuring grains grown and ground on the family farm. Stop by for a taste, a tour, a bottle, or a case. www.steindistillery.com

Wallowa Lake State Park

Featuring water sports, hiking, campgrounds, horse back riding and many other outdoor activities. www.wallowalake.net

Wallowa Lake Tramway

This tram will take you to a stunning view of the "Alps" of Oregon and Hells Canyon. www.wallowalaketramway.com

Art Walks

Joseph has abundant art from the many Bronze sculptures that adorn the city streets to its many galleries. Visit Stewart Jones Designs to view intricate jewelry designs made from a circa 1860 Swiss Rose Engine. www.stewartjonesdesigns.com

The Sheep Shed

can fill your needs for Fine Fiber, Art, and supplies. Featuring products made in Wallowa County. www.josephsheepshed.com

Matterhorn Village

The mountains of the Eagle Cap Wilderness are often called the "Alps" of Oregon. Don't miss the chance to see a small version of a Swiss village. Matterhorn Village at Wallowa Lake features a gift shop (Die Alpen), Mt Pines Miniature golf, and the Matterhorn Ice Cream Shop. www.thematterhornvillage.com

Wallowa Lake Lodge

Spend the night at historic Wallowa Lake Lodge and wake up to a wonderful breakfast of hazelnut pancakes with marionberry butter and coffee. www.wallowalakelodge.com



DAY FOUR

Hells Canyon Adventures

Hells Canyon Adventures can provide you with entertainment and beauty on an unprecedented scale. Tackle immense rapids, quietly float downriver, watch black bears, deer, and big horn sheep graze the hill sides. Hear tales of miners, ranchers, outlaws, and see native pictographs. Walk along the quiet river side, get soaked in the raging river. All of this can be had. Hells Canyon Adventures offers jet boat tours, fishing charters, and shuttles for rafting and hiking. www.hellscanyonadventures.com



Halfway, OR

Halfway, OR

The town of Halfway, Oregon took its name from the Post Office, located on the Alexander Stalker ranch, that was halfway between the towns of Pine and Cornucopia. During the dot.com boom of the late 1990's the town officially renamed itself Half.com. Halfway is now a jumping off point for outdoor recreation. Snowmobiling in the winter, hunting, and activities in Hells Canyon. www.halfwayoregon.com

Pine Valley Lodge

Stay at the colorful (paint & decorations) Pine Valley Lodge for authentic and charming accommodations. www.pvlodge.com

Babette's Gallery

Across the street from Pine Valley Lodge is Babette Beatty's Gallery. Babette is a fabulous Matisse-like painter capturing intimate spaces. See her work on line at www.babettesgallery.com

Cornucopia, OR

Today Cornucopia is a ghost town of the gold boom of the 1880's. Gold was discovered in 1884 and the town platted in 1886. Now you can see and feel the history. www.ghosttowns.com/states/or

Hells Canyon, OR

Rafting

"Sharing nature - Enriching Lives" is the mission of ROW Adventures. Soak in the history, geology, and wild-

life on a six day white water trip. Experience Grand Canyon style rapids, 70-degree water temperatures, Native American pictograph sites, and pioneer homesteads. Up for something even more adventurous? Try one of ROW Adventures international trips. www.rowadventures.com

A Scenic Drive

Hells Canyon is a 10-mile wide canyon that represents the deepest

river gorge in North America. Hells Canyon offers history, wildlife, the Snake River, and endless beauty not to be missed. The Hells Canyon Scenic Byway winds its way along the east side of this massive rift that separates Idaho from neighboring Oregon. Towering cliffs of green and black basalt cling from shelves that tower to the mountain peaks above. For more information go to www.fs.fed.us/hellscanyon

